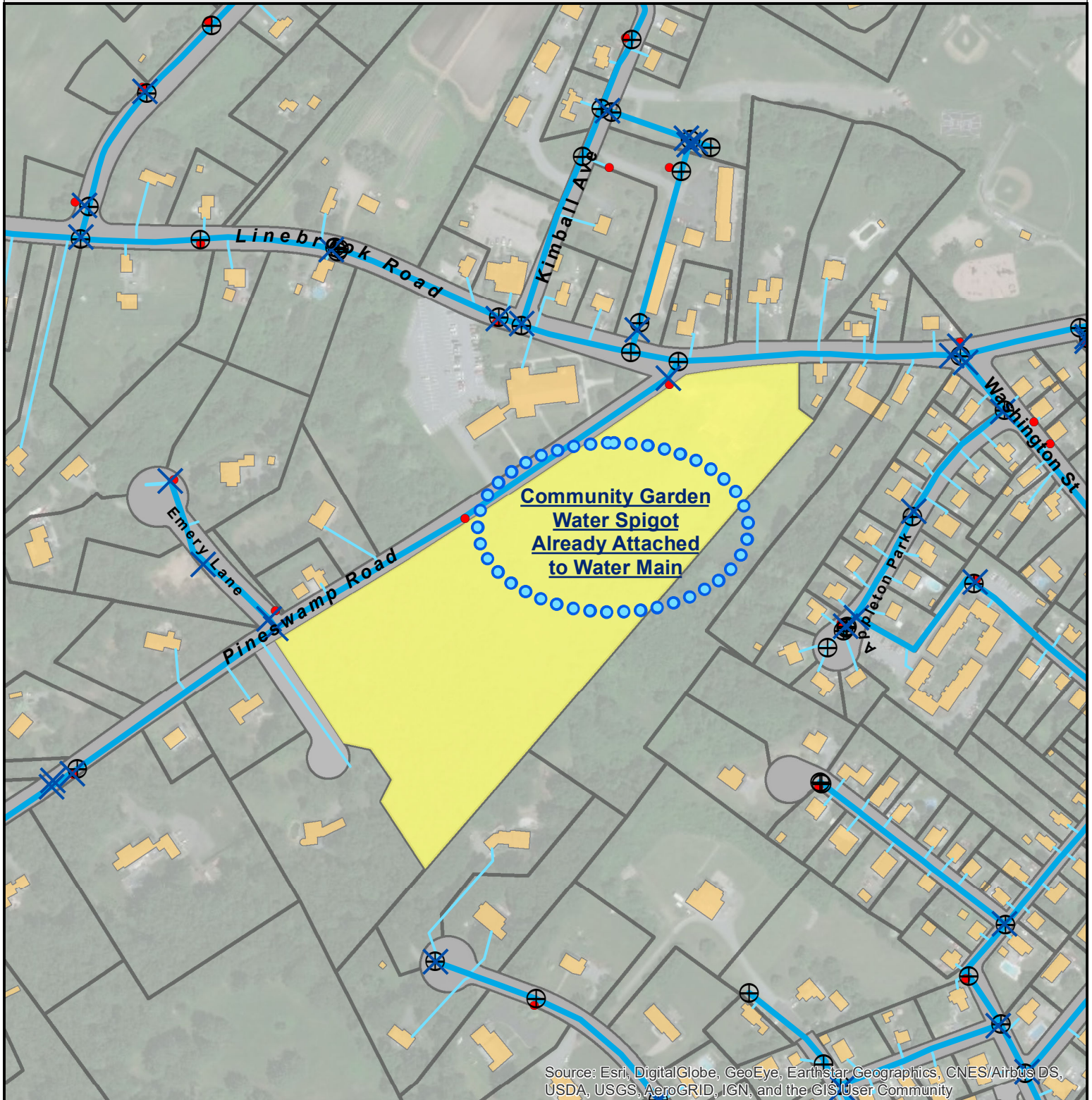


Proposed Ipswich Public Safety Facility -- 4 Pineswamp Road

Water Utilities



Legend

- ✕ Curb Stop Valves
- Fire Hydrants
- Subject Site
- ⊕ Water Fittings
- Water Mains
- Existing Structures
- Lateral Pipes



0 150 300 600 Feet

Date: February, 2020
Prepared By: Nicholas LaQuerre
Ipswich, Massachusetts
Department of Planning And Development
Sources: MassGIS, ESRI, Town of Ipswich

This Map is for illustrative purposes only.
The boundary and easement lines depicted
are not surveyed and are not necessarily to scale.